

# Do Now

Food webs help to explain the types of relationships organisms have with each other. Brainstorm a list of 5-8 organisms you would need to include in a food web that explains why people aren't going to Dover Island.

*Hint: Don't forget the producers.*

When done, start reading the  
"Parachuting Cats into Borneo" article.

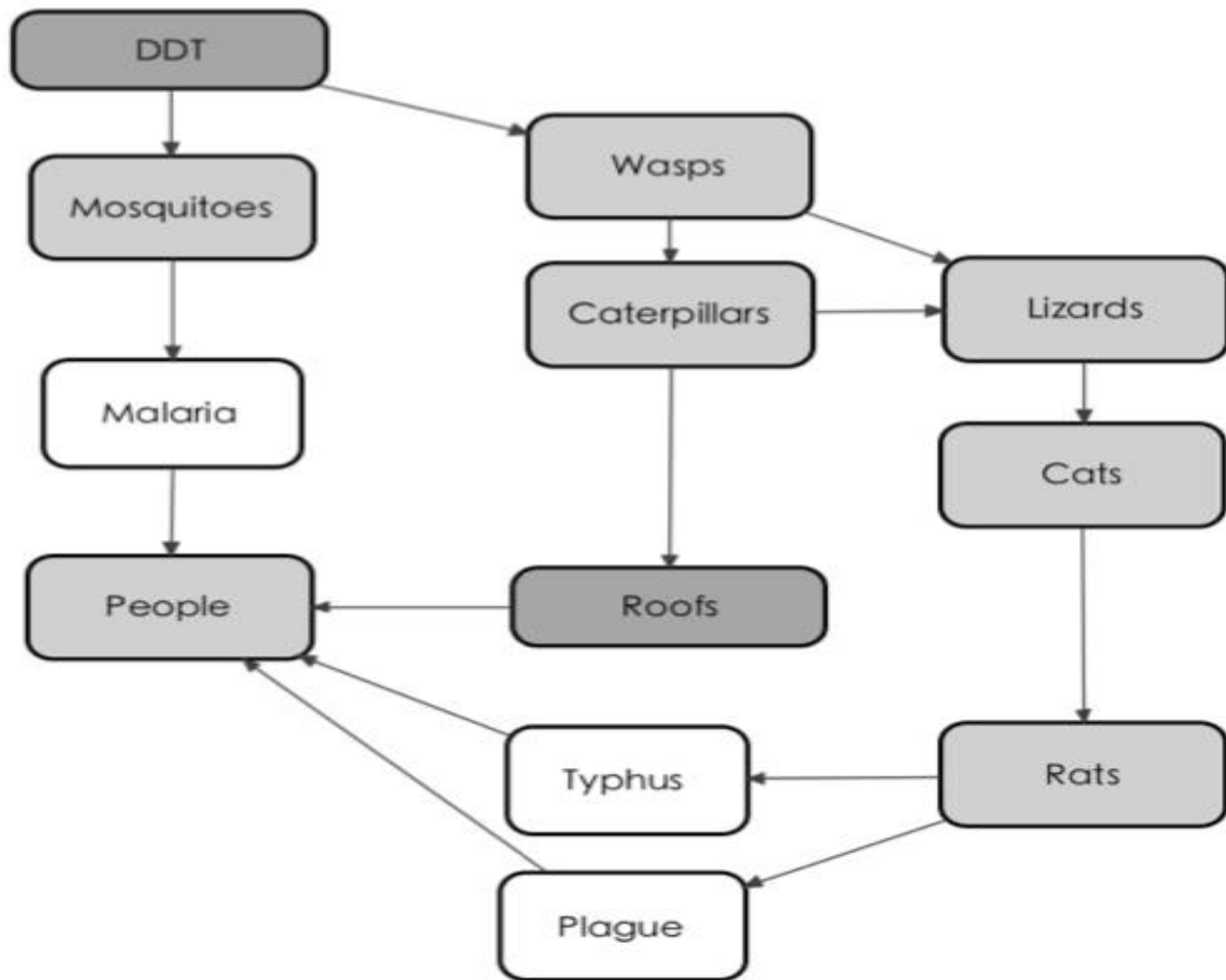
# Parachuting Cats Into Borneo



# Concept Map

# Goals for Today

1. Get into your teams
2. Share what you have discovered in each of your roles - use your Scientist Guide Sheet.
3. On one computer, use the graphs in EcoMUVE to look for trends over time.
4. Decide as a group what other evidence needs to be collected in order to explore your original team hypotheses.



Relationships in ecosystems  
are complex and changes to  
them can lead to unintended  
consequences.

# Teamwork: Concept Map

1. Create a concept map with your team showing the connections between the organisms in the Population Data Table.

# Today We Will:

1. Import Master Data File
2. Complete your Role Guide Sheet
3. BrainStorm which organisms to include in your Food Web that support your claim.
4. Complete the Ecomuve Food Web